

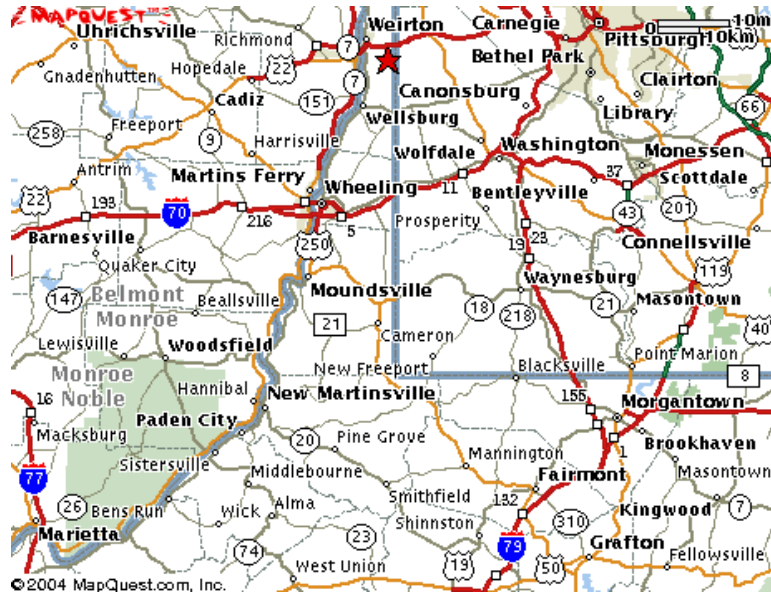
Welcome! We'd like to introduce you to Brooke Place, Family Connections' group home for adolescent girls.



Brooke Place is a Level II facility for girls ages 12 -18. It is licensed by the West Virginia Department of Health and Human Resources as a Child Caring Agency and by the Office of Facilities, Licensure, and Certification (OHFLAC).



We're on the map:



Brooke Place is located on 6.5 acres in Colliers, WV, - Brooke County - just outside of Weirton. There is access to the facility via OH State Route 7, WV State Route 2, and US 22. Our address is 3305 Tent Church Road.

From Wheeling and points South:

Take Route 7 North to Steubenville
Follow Route 22 East as if going to Pittsburgh
Take the Harmon Creek Exit and turn right off ramp
Follow road about 4.5 miles to Colliers
Turn right onto Mechling Hill Road (immediately after elementary school)
At stop sign at top of hill turn left.
Go about 4 tenths of a mile to Tent Church Road and turn right



Go about 6 tenths of a mile to the entrance at Brooke Place.
Lost? Call 527-3303

FAMILY CONNECTIONS

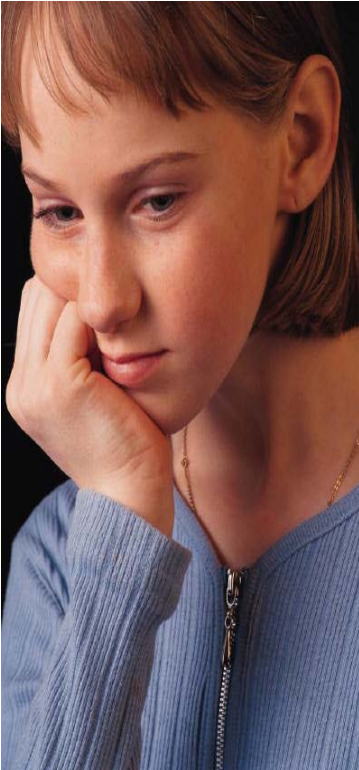
Brooke Place has capacity for 12 girls and accepts referrals from all over the state, with preference given to girls with families in Hancock, Brooke, Ohio, and Marshall Counties. We do not maintain a waiting list, but suggest alternative placements as appropriate when we are at capacity.



For the care, welfare, safety, and security of our residents and staff, Brooke Place is equipped with closed circuit cameras in 9 different locations.



Who is an appropriate referral?



We see girls who can be experiencing problems with...

- Depression
- Post-traumatic stress
- Behavior
- Abuse of substances
- Eating disorders
- Family
- Abuse/neglect
- School
- Community

No girl will be discriminated against for services provided by Family Connections based on her race, religion, national origin, sexual orientation, age, disability, or other protected status.

Proud Member of



A passion to help. The ability to deliver.

Keeping in touch:

Residents have access to the phone and privacy at designated times. Family and the case worker help develop a call list for each resident. When access is sometimes restricted, the reasons are documented in the resident's treatment plan.



Talking things over face to face:

With so much openness in the house, the residents and families enjoy a private area for counseling. The frequency of therapy is determined by the individual needs of the resident and her family. In a therapeutic milieu, where the medium for change is the environment, what happens outside of formal counseling is often more critical than what takes place during the session. Brooke Place works to focus treatment on "the other 23 hours."



What's so great about a great room?

The great room at Brooke Place is spacious enough for indoor activities and for (mostly) containing the energy of 12 active girls, yet it also permits areas to be designated for phone calls, reading, and TV. Group counseling also takes place in this setting.



A computer area is available for the residents to work on school reports, do research, use educational programs, write letters, design cards, play games, and generally improve their computer skills. Internet access is strictly limited.



FAMILY CONNECTIONS

Where work and eat meet:



The dining area is also the site for daily evaluation meetings, mandatory study time, arts and crafts projects, house meetings, puzzle building, and of course, snacks.



Chez Brooke Place:



The galley style kitchen allows for easy supervision of residents when they assist with meal preparation. All residents and staff participate in Food Handler's training and menus are developed and reviewed by a licensed dietician.



FAMILY CONNECTIONS

Each bedroom is shared by 2 residents. For additional privacy (and to make morning transitions a little less hectic), each bedroom has its own bathroom. Residents have plenty of drawer space, designated areas to personalize their room, and every girl has her own closet for safeguarding her belongings. The closets can be locked by staff.



The bedrooms open into the home's great room. With the doors open, this permits better supervision while allowing the girls time to be away from the group as needed.

Medical Care

Brooke Place's RN comes into the facility at least 2 days/week and is typically available to staff for consultation by phone. The RN reviews all medication management. Girls at Brooke Place are able to self-administer their medication, but the RN informs them (and their parents/guardians) why medication was prescribed and of potential side effects. Child care workers monitor the residents taking their medication.



Every effort is made to schedule new residents for a Healthcheck within 24 hours of admission. Brooke Place has agreements with 2 local pediatricians who administer basic medical care. Psychotropic medications are generally prescribed and managed by the psychiatrist at Weirton Medical Center. Family Connections also has an agreement with a local dentist for dental care.



Room to grow



The multi-purpose room has sufficient space for groups, exercising, games, and staff training. Brooke Place employees participate in monthly trainings on a variety of subjects including: Respecting cultures, continuous quality improvement, behavior management, crisis management, emergency response, away from supervision, harassment in the workplace, and legal/ethical issues.



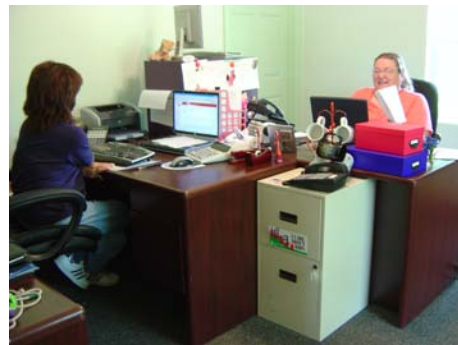
We Grew

Family Connections staffs Brooke Place using a combination of shifts. Some child care workers stay overnight and are able to sleep, while others come in at night and stay awake. This staffing pattern necessitated that we add a staff bedroom once the house reached capacity for residents.



The Office

Brooke Place also expanded office space so there would be more administrative support for employees and residents. For those of us who started in child care and now have other roles, this opportunity to see the girls more often has been refreshing.



Learning Responsibility

Residents are taught basic living skills through the Philip Roy curriculum and evaluated using the Daniel Memorial assessment tool. Care of themselves and their environment is considered a first crucial step, but responsibilities in the larger world are important also.



Activities



With the house and yard making only a small footprint on the 6.5 acres, there is land still to be developed. On the agency's wish list is extending the recreation area for a basketball court (and not utilizing the parking lot for that purpose), developing an area for volleyball, croquet, and camping.



Family

Family Connections supports involvement by family members in every aspect of a girl's life. We encourage family to participate in therapy, to call with questions, and to provide their girl with direction, encouragement, and limits. We want family members to participate in planning and decision making, including decisions about home visits. In some circumstances, it makes sense for a parent(s) or grandparent(s) to spend more time at Brooke Place with their girl rather than send her home. We added a room for just such occasions.



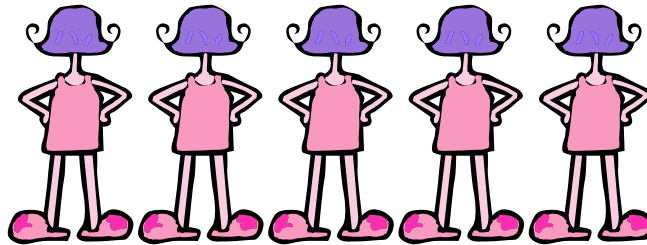
Home visits occur on the 1st and 3rd weekends only. Brooke Place takes responsibility for providing roundtrip transportation the 1st weekend of the month to a designated pickup location. We provide "from-there" transportation on the 3rd weekend at the designated location. (Please be aware there are limits: weather permitting, availability of staff and vehicles, etc.) Families are responsible for picking up their daughter at the group home on that weekend. Modest gas vouchers are available for parents who have a demonstrated need for help. Girls are expected to make a written request for the visit early in the week.



Whether or not the girl will be permitted to have the visit depends on several factors including her safety and her health and whether she put her request in on time. Her behavior on her previous visit may also impact her visit, but this is addressed with parents (and sometimes caseworkers and POs) so that most often an agreement is reached with all parties. Family visitation also occurs at Brooke Place on Sundays - and sometimes on other days by prior arrangement.

Over the Rainbow

"We're girls. We get angry with each other, we giggle together, and there are times we cry together. We still enjoy helping each other do hair and make up and pick out clothes. We all have at least one favorite stuffed animal, and we keep pictures of home in our rooms."



That was written by some of our residents for an agency newsletter. It highlights why it's so important to develop a treatment perspective that is girl-friendly. Brooke Place does not use any kind of level or point system. Research has shown they are not successful with girls because for girls it is all about relationships, relationships, relationships. It is the connections they make and the way they think about themselves that will move them forward. They can visual their growth as a journey as outlined below.

"THERE'S NO PLACE LIKE HOME" A Girl's Journey Through Brooke Place



Turmoil. Confusion. Chaos. Uncertainty. Fear.

It's a whirlwind of feelings. Everything seems to be coming at me at once. I thought it would be better by now, but I'm still feeling as if I'm spinning in a tornado. I want to find my way out.



"I will use my head."

I am learning how to make better decisions. I know my thinking guides my actions and even influences my feelings. I am thinking before I act and making choices that will have positive consequences in my life.



FAMILY CONNECTIONS



"I will reveal my heart."

I am learning to show compassion. I help myself and others. I participate in community service, show an appreciation for what makes us different, and practice kindness and respect in my relationships.



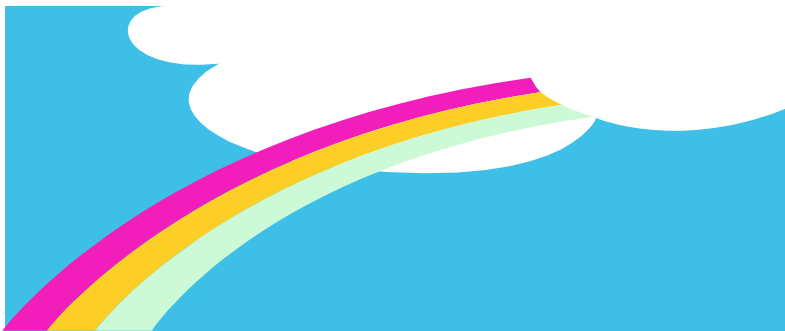
I will show courage!"

I am learning how strong I am! I stand up for myself in a way that helps me and doesn't hurt others. I am not afraid of challenges! In fact, I eat 'em for breakfast!



The power of the ruby slippers.

There was no magic to my journey. I had the power all along to make my way because the power is inside ME. I've made friends along the way, and I'll miss them, but I'm ready to leave, and I'm confident that I've learned things that will help me down whatever road I'm taking.



Our Community



Girls at Brooke Place in 9th through 12th grades attend Brooke High School. Brooke Place encourages residents to be involved in after school activities and finds that this connection to the school generally improves the resident's grades and helps normalize the stay at the group home. Girls have participated in band, silk line, theatre, chorus, and softball. The picture above is of the recent Wellness Center addition to the school.



FAMILY CONNECTIONS

Sometimes girls who have had difficulty achieving success with traditional education have benefited from Brooke County's Alternative Learning Center. Admission to this program is determined by the school with input from the Brooke Place director and staff, the student, her family, and her caseworker.



Residents in 5th through 8th grade attend Follansbee Middle School. Again, residents are encouraged to participate in activities sponsored by the school. There is a behavior program available for qualifying students and the dedicated teachers here have a history of working well with the residents of Brooke Place.



FAMILY CONNECTIONS

Helping the residents understand what resources exist in their community is an important part of their education. We want them to take what they learn and apply this information to their home community. Most girls at Brooke Place get library cards and participate in some activities which engage the library's resources. The picture below is the Brooke County Library.



Weirton Medical Center is located 10 minutes from Brooke Place (and not a single red light along the way). This is where the residents are taken for emergency care.



FAMILY CONNECTIONS

A local institution, the Millsop Community Center is located about 15 minutes from Brooke Place in Weirton. It has basketball and racquet ball courts, a swimming pool, a variety of exercise equipment, and hosts special events. Also, it has boys. That always makes it an interesting (to say the least) place to take the girls!



Residents of Brooke Place are able to attend area churches and many of the girls avail themselves of that opportunity. It is another way they make important, and sometimes lifelong, connections in their community.



FAMILY CONNECTIONS

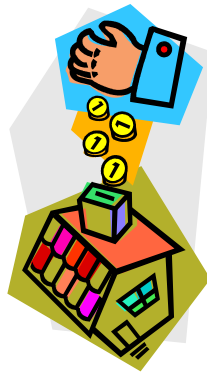
During the summer, Brooke Place residents like to take advantage of the group home's pool membership and spend a couple of afternoons cooling off and practicing their skills scoping out guys without being too obvious. Trust us, it's a skill.



\$\$\$\$\$\$\$ Funding \$\$\$\$\$\$\$\$

Funding for Brooke Place's residential services are paid for by the WV Department of Health and Human Resources - Bureau of Children and Families and Medicaid.

Family Connections desires to be a good steward of Federal and WV State dollars. To that end, the agency strives to be efficient and at the same time provide best practice services that are cost effective.



Board of Directors

- Christopher Byers
- Jennifer Kirkbride
- Kathy Shelek-Furbee
- Cathy Sobel
- Peg Cartus
- Michael Palma
- Tom Zielinsky
- Joanne Dobrzanski



Mission

- Family Connections is committed to helping individuals function to the best of their abilities by engaging the resources that exist naturally within their family and community.
- Interventions provided by Family Connections are theory-based and guided by the principle that the individual is best treated within the context of their family.
- Family Connections is dedicated to the care, welfare and respect of families and the individuals who comprise them.



Family Connections' outpatient clinic is now located in the Weirton Medical Center's Medical Office Building (on the right).

Suite 412
651 Colliers Way
Weirton, WV 26062

Supplemental information is available at our website. www.familyconnectionsinc.org
Group home email brookeplace@familyconnectionsinc.org
Organization email admin@familyconnectionsinc.org